

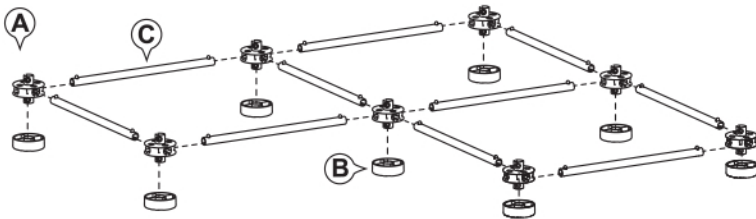
DO NOT RETURN THIS UNIT TO THE STORE Please make sure you have all parts prior to assembly.

All SportPet® products include a 6-month limited manufacturer's warranty for defective or missing parts. If any parts are missing or damaged please email our friendly customer service center at info@sportpet.com.

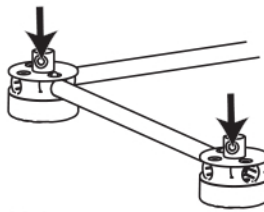
TOUGH TO PUT TOGETHER SO IT'S EVEN TOUGHER FOR YOUR CAT TO POUNCE APART!

Step 1

Assemble base using **Joints (A)**, **Feet (B)** and **Pipes (C)** as shown.
*Look at **TIPS** below construction for successful assembly tricks!



TIP A



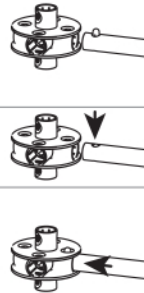
Make sure holes in **Joints (A)** are all facing the same direction.

TIP B

Face metal button upwards on **Pipe (C)**.

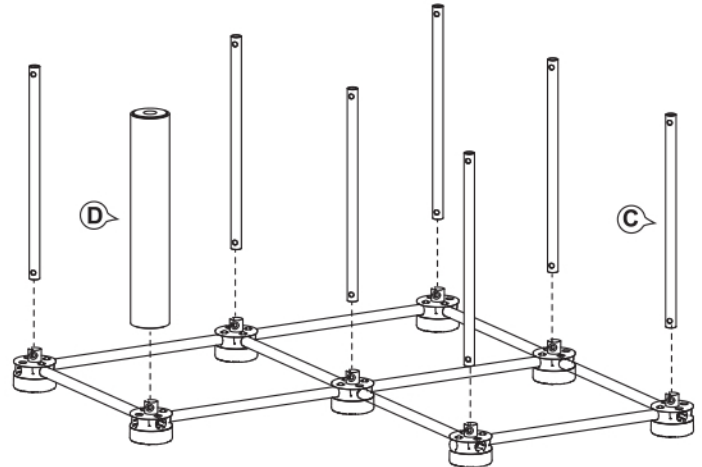
Press down on metal button in **Pipe (C)**.

While holding down metal button in **Pipe (C)** push pipe into **Joint (A)**. When the metal button pops through the hole in the joint, the parts are locked together correctly!



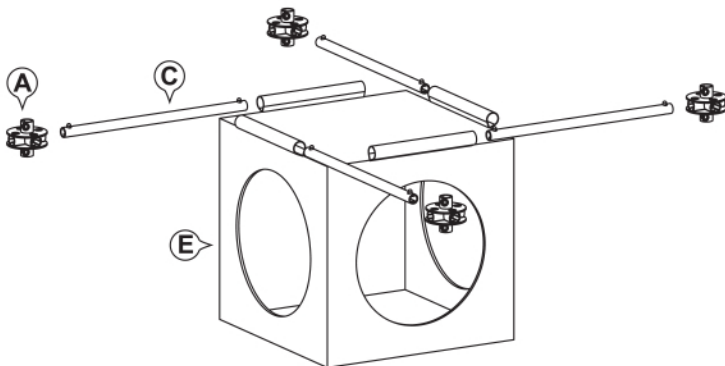
Step 2

Insert **Pipes (C)** and **Post (D)** into base as shown.



Step 3

Using **Cube (E)** slide **Pipes (C)** through sleeves. Insert **Pipes (C)** into **Joints (A)** as shown.

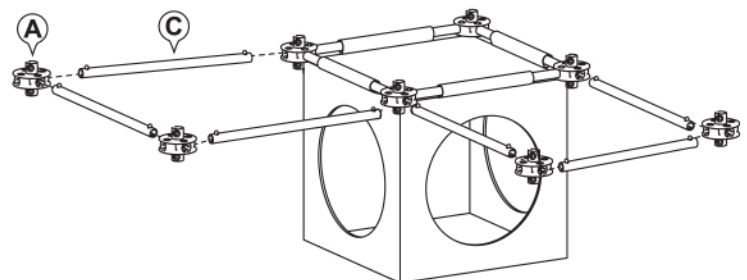


TIP A

Ensure all holes in **Joints (A)** are oriented the same way as joints in Step 1.

Step 4

Insert **Pipes (C)** into **Joints (A)** as shown.

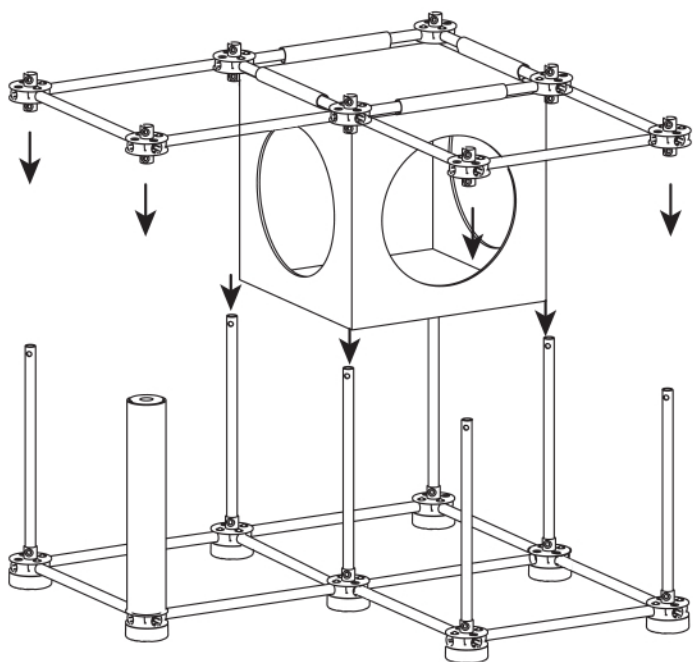


TIP A

Ensure all holes in **Joints (A)** are oriented the same way as joints in Step 1.

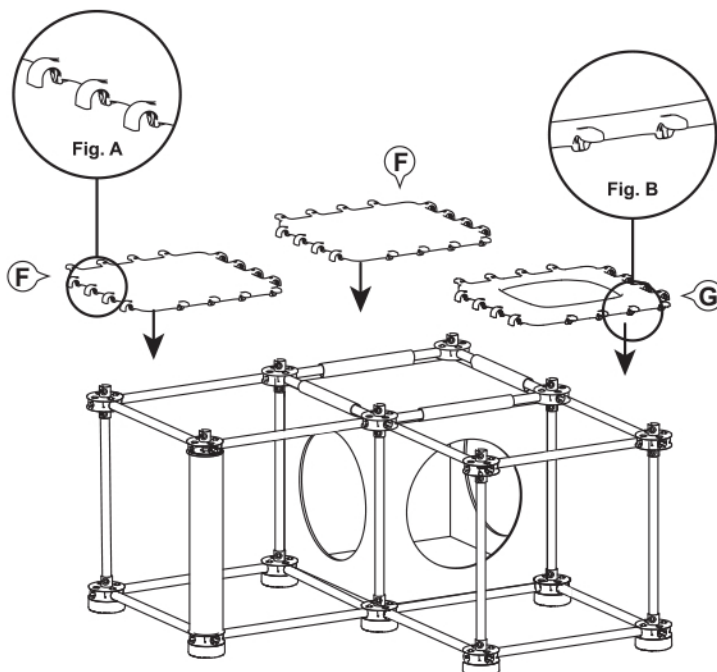
Step 5

Connect to frame. Insert **Pipes (C)** into **Joints (A)** as shown.



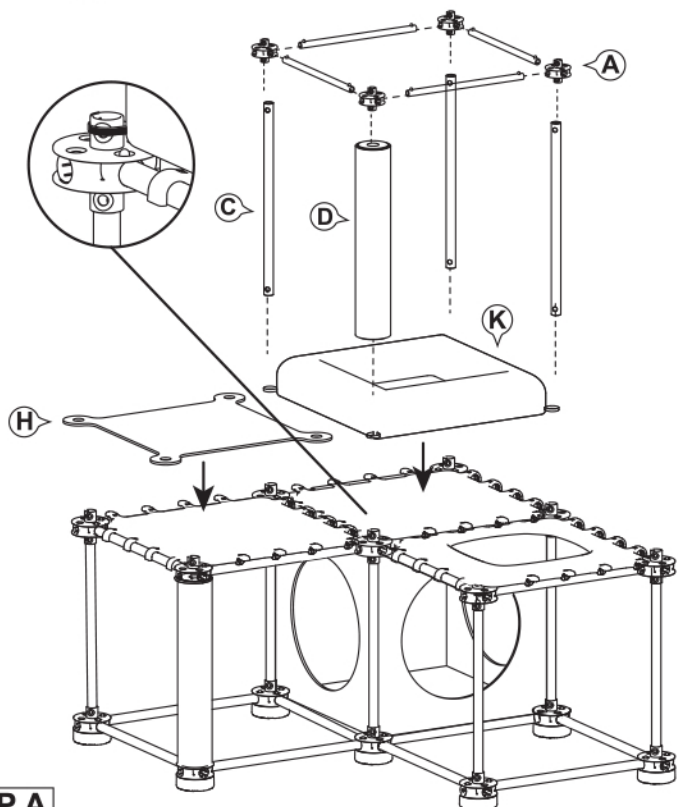
Step 6

Snap **Panels (F)** onto frame as shown. Make sure to orient the panels so all of the **Clips (Fig. A)** and **Fingers (Fig. B)** are in the same direction. This will make it easier to assemble the rest of the item.



Step 7

Place **Felt Platform (H)** onto panel as shown. Attach **Fleece Bed (K)** to top of completed structure. Wrap corner elastic loops over tops of **Joints (A)** as shown. Insert **Pipes (C)** and **Post (D)** into **Joints (A)** as shown.

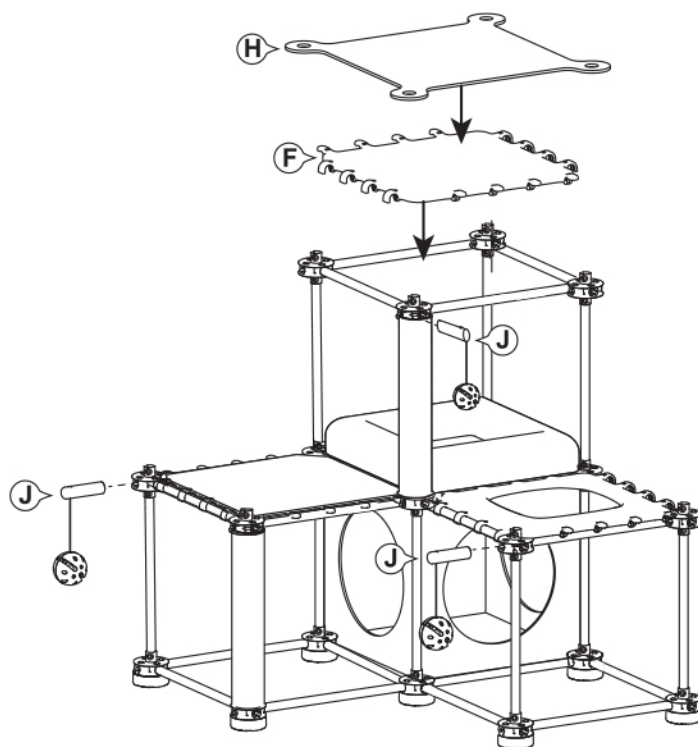


TIP A

Ensure all holes in **Joints (A)** are oriented the same way as joints in Step 1.

Last Step

Snap **Panel (F)** onto **Pipes (C)** and push down to lock panel in place. Place **Felt Platform (H)** onto panel as shown. Attach **Toys (J)** into any open **Joints (A)** as shown.



TIP C

Ensure **Panel (G)** has clips and fingers oriented the same way as the panels in Step 6.



Because every cat is different, it is important to monitor your cat's behavior with this product. If at any time your cat damages this item, or any portion of this item becomes damaged, remove the damaged portion or discontinue use of the product.