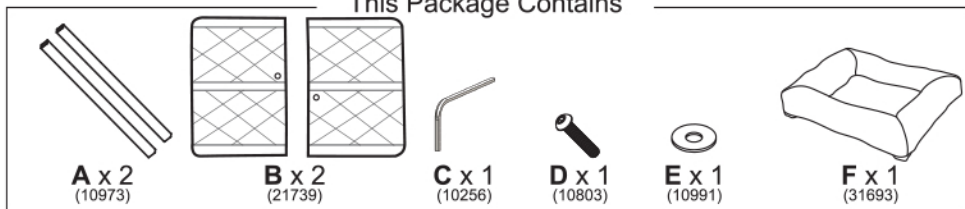


This Package Contains

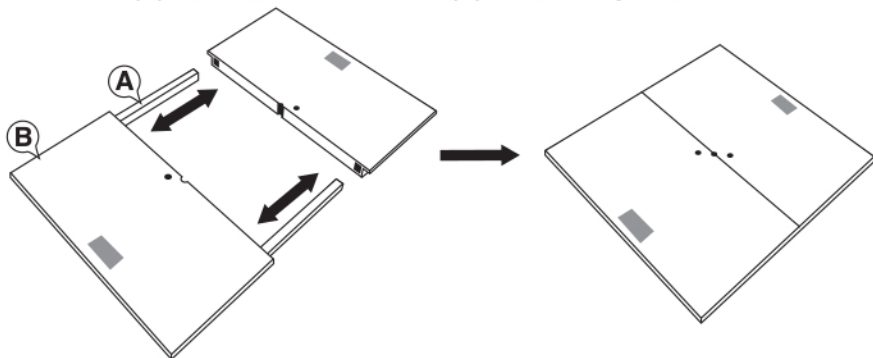


## DO NOT RETURN THIS UNIT TO THE STORE

Please make sure you have all parts prior to assembly. All SportPet® products include a 6-month limited manufacturer's warranty for defective or missing parts. If any parts are missing or damaged, please email our friendly customer service center at [info@sportpet.com](mailto:info@sportpet.com)

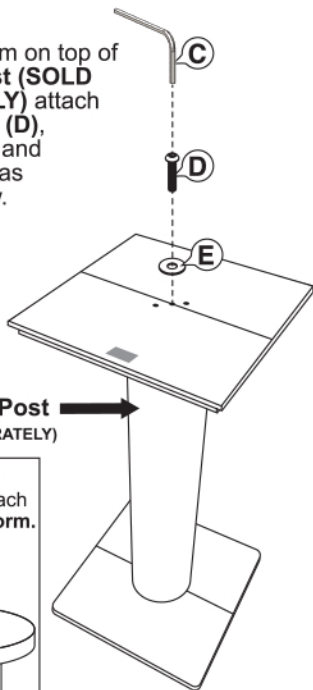
### Step 1:

Insert Poles (A) into Plastic Base Halves (B) and slide together to form base.



### Step 3:

Place platform on top of Scratch Post (SOLD SEPARATELY) attach using Screw (D), Washer (E), and Wrench (C) as shown below.



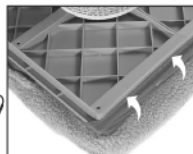
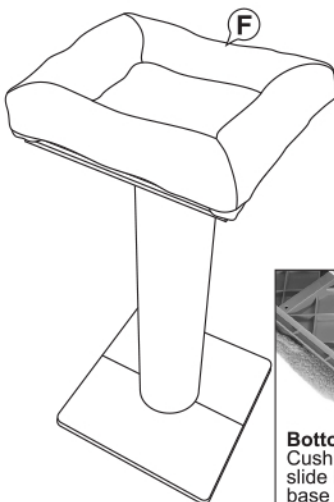
Scratch Post  
(SOLD SEPARATELY)

Remove Circle Platform to attach Cushion Platform.



### Last Step:

Attach Cushion (B) to assembled platform by sliding sleeves over bottom of base. Press cushion down to secure cushion to hook and loop tabs on top of base.



Bottom View  
Cushion Sleeves  
slide between  
base layers.



Because every cat is different, it is important to monitor your cat's behavior with this product. If at any time your cat damages this item, or any portion of this item becomes damaged, remove the damaged portion or discontinue use of the product.