

This Package Contains



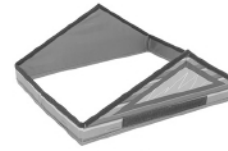
**A x 1**  
(31648)



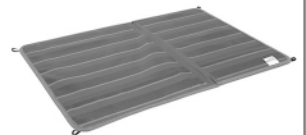
**B x 1**  
(31657)



**C x 1**  
(31666)



**D x 1**  
(31675)



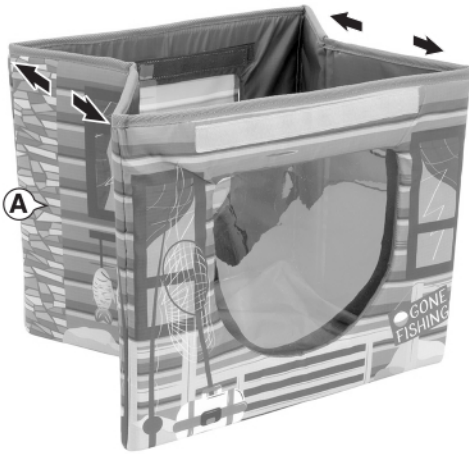
**E x 1**  
(31684)

**DO NOT RETURN THIS UNIT**

Please make sure you have all parts prior to assembly. All SportPet® products include a 6-month limited manufacturer's warranty for defective or missing parts. If any parts are missing or damaged, please email our friendly customer service center at info@sportpet.com

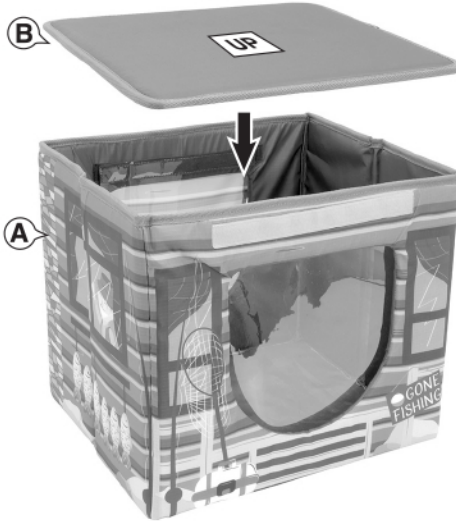
**Step 1**

Pull **Cube (A)** panels away from each other to create a cube.



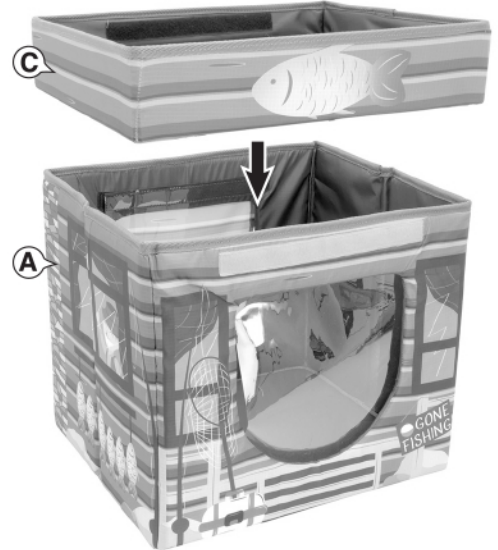
**Step 2**

Place **Base (B)** inside **Cube (A)**.



**Step 3**

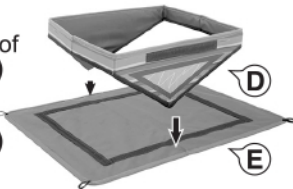
Place **Lid (C)** with the black hook and loop tabs side facing up (as shown below) on top of **Cube (A)**. Press firmly against hook and loop tabs for good adhesion.



**Step 4**

Place **Angled Cube (D)** down on top of **Ceiling (E)** to create **Roof (D&E)**.

**A.** Align short sides of **Angled Cube (D)** and **Ceiling (E)**. Lineup peaks of **Angled Cube (D)** with fold line of **Ceiling (E)**.



**B.** Attach short side **Angled Cube (D)** to short side of **Ceiling (E)** using hook and loop tabs. Press firmly

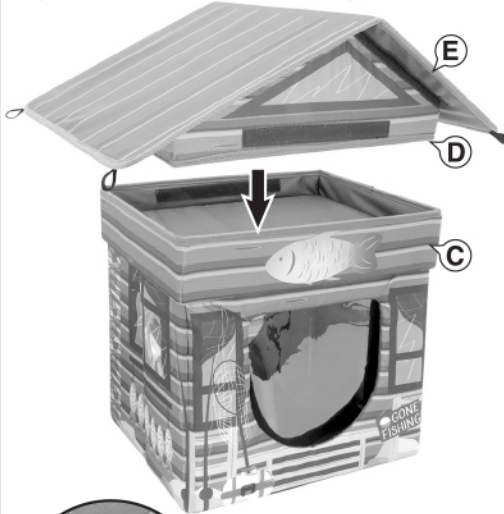


**C** Attach long side of **Angled Cube (D)** to long side of **Ceiling (E)** using hook and loop tabs. Press firmly.



**Last Step**

Place **Roof (D&E)** inside **Lid (C)**. Press firmly against hook and loop tabs for good adhesion.

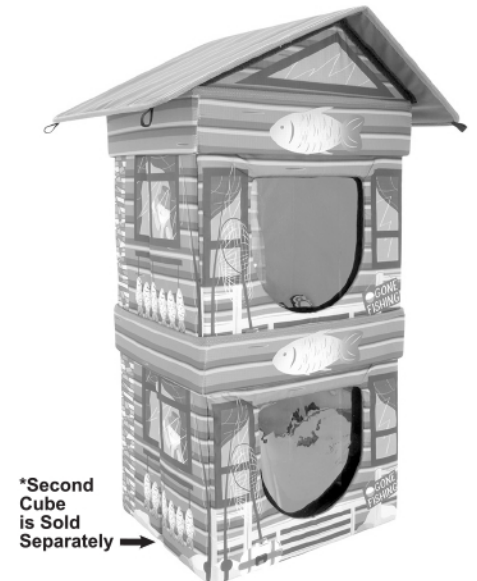


← The roof **Ceiling (E)** includes tie down loops for you to fasten Outside Cat Cabin to the ground. PURCHASE DOES NOT INCLUDE TIE DOWN STRING OR ANCHORS.

**Stacking Two Cubes**

Stack two cubes on top of one another by taking out **Roof (D&E)** and placing the top cube inside the bottom cube lid.

**DO NOT STACK MORE THAN TWO HOUSES**



\*Second Cube is Sold Separately



Because every cat is different, it is important to monitor your cat's behavior with this product. If at any time your cat damages this item, or any portion of this item becomes damaged, remove the damaged portion or discontinue use of the product.