

This Package Contains



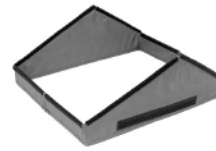
A x 2
(31277)



B x 2
(31286)



C x 2
(31295)



D x 1
(31301)



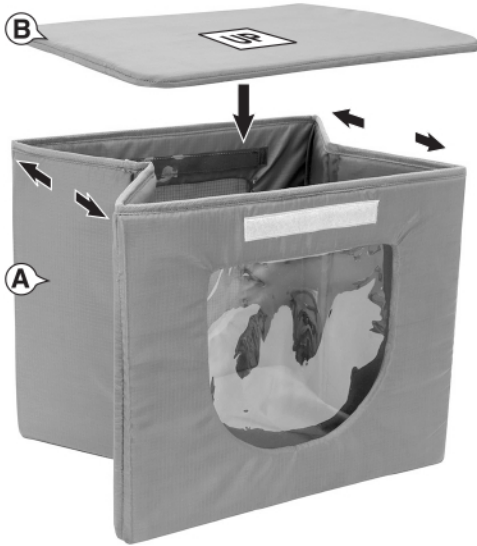
E x 1
(31310)

DO NOT RETURN THIS UNIT

Please make sure you have all parts prior to assembly. All SportPet® products include a 6-month limited manufacturer's warranty for defective or missing parts. If any parts are missing or damaged, please email our friendly customer service center at info@sportpet.com

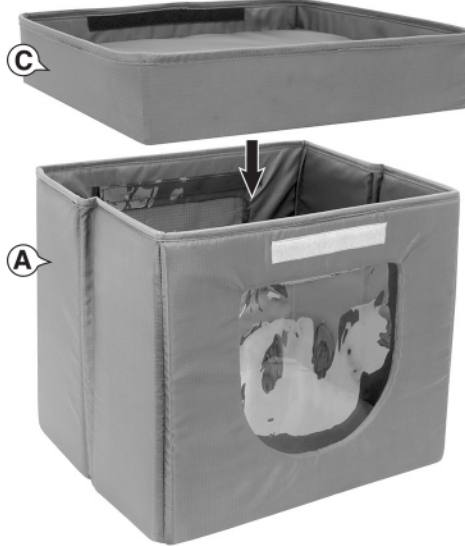
Step 1

Pull **Cube (A)** panels away from each other to create a cube. Place **Base (B)** inside **Cube (A)**.



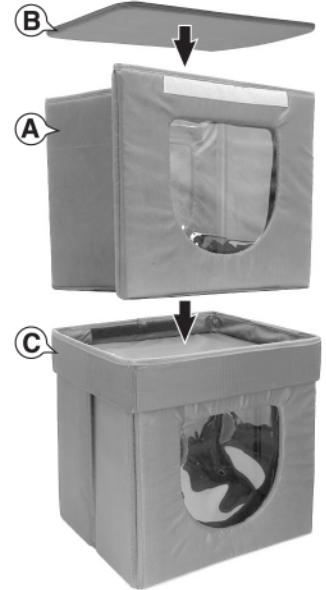
Step 2

Place **Lid (C)** with the black hook and loop tabs side facing up (as shown below) on top of **Cube (A)**. Press firmly against hook and loop tabs for good adhesion.



Step 3

Place **Cube (A)** inside **Lid (C)** and pull panels away from each other to create a cube. Place **Base (B)** inside **Cube (A)**.



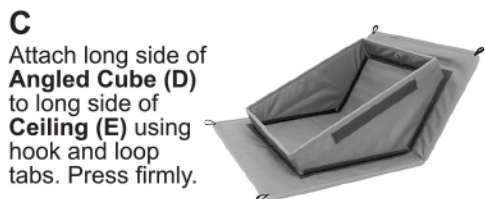
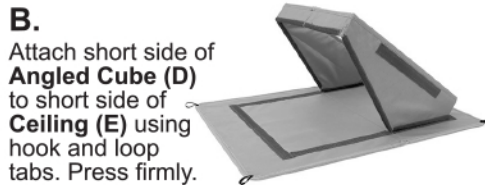
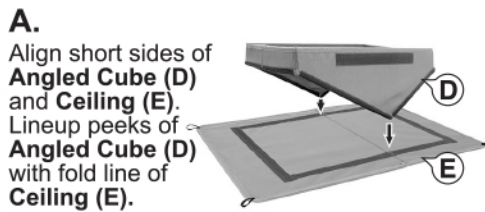
Step 4

Place **Lid (C)** with the black hook and loop tabs side facing up on top of **Cube (A)** (as shown below). Press firmly against hook and loop tabs for good adhesion.



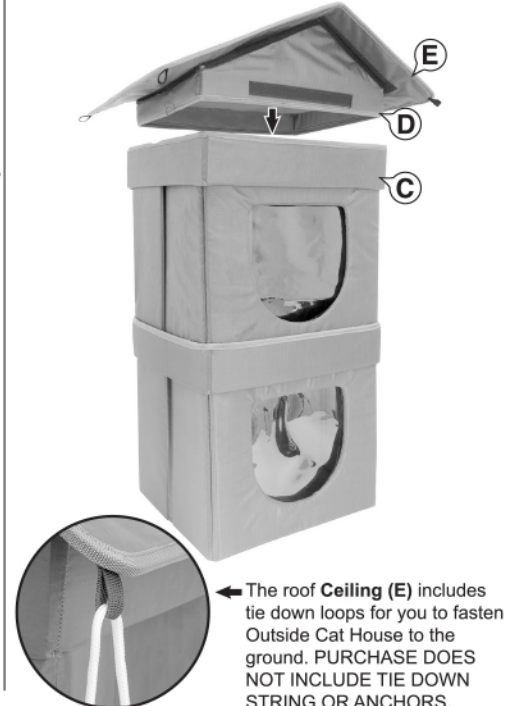
Step 5

Place **Angled Cube (D)** down on top of **Ceiling (E)** to create **Roof (D&E)**.



Last Step

Place **Roof (D&E)** inside **Lid (C)**. Press firmly against hook and loop tabs for good adhesion.



Because every cat is different, it is important to monitor your cat's behavior with this product. If at any time your cat damages this item, or any portion of this item becomes damaged, remove the damaged portion or discontinue use of the product.