

This Package Contains



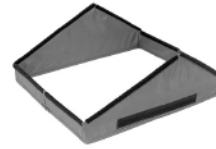
A x 1
(31277)



B x 1
(31286)



C x 1
(31295)



D x 1
(31301)



E x 1
(31310)

DO NOT RETURN THIS UNIT

Please make sure you have all parts prior to assembly. All SportPet® products include a 6-month limited manufacturer's warranty for defective or missing parts. If any parts are missing or damaged, Please email our friendly customer service center at info@sportpet.com

Step 1

Pull **Cube (A)** panels away from each other to create a cube.



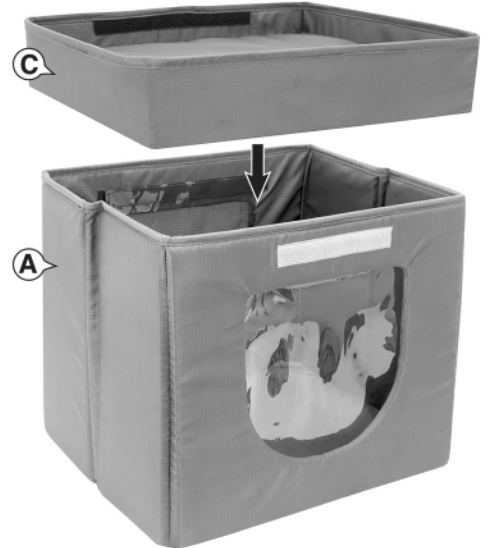
Step 2

Place **Base (B)** inside **Cube (A)**.



Step 3

Place **Lid (C)** with the black hook and loop tabs side facing up (as shown below) on top of **Cube (A)**. Press firmly against hook and loop tabs for good adhesion.



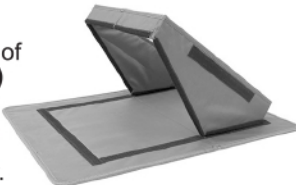
Step 4

Place **Angled Cube (D)** down on top of **Ceiling (E)** to create **Roof (D&E)**.

A. Align short sides of **Angled Cube (D)** and **Ceiling (E)**. Lineup peaks of **Angled Cube (D)** with fold line of **Ceiling (E)**.



B. Attach short side of **Angled Cube (D)** to short side of **Ceiling (E)** using hook and loop tabs. Press firmly.

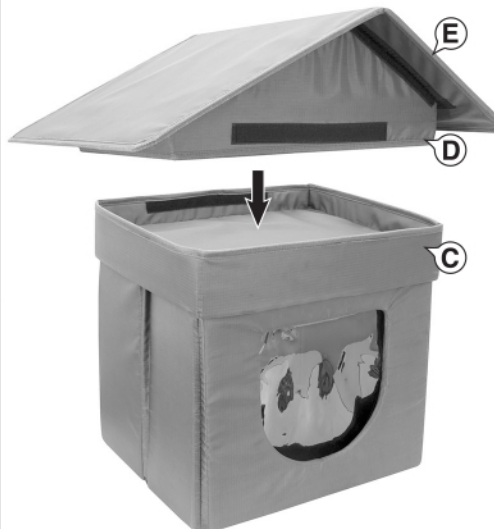


C Attach long side of **Angled Cube (D)** to long side of **Ceiling (E)** using hook and loop tabs. Press firmly.



Last Step

Place **Roof (D&E)** inside **Lid (C)**. Press firmly against hook and loop tabs for good adhesion.



Stacking Two Cubes

Stack two cubes on top of one another by taking out **Roof (D&E)** and placing the top cube inside the bottom cube lid.

DO NOT STACK MORE THAN TWO HOUSES



Because every cat is different, it is important to monitor your cat's behavior with this product. If at any time your cat damages this item, or any portion of this item becomes damaged, remove the damaged portion or discontinue use of the product.