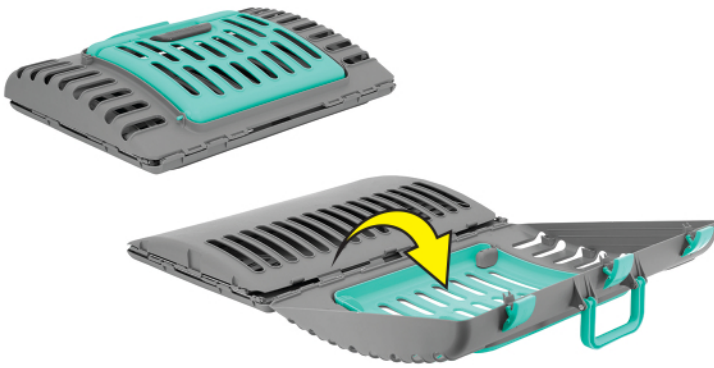


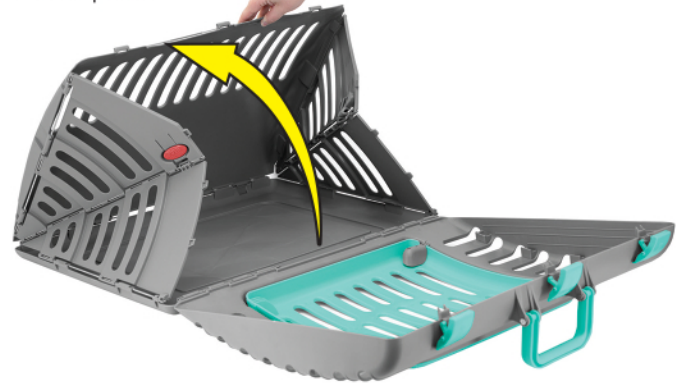
STEP 1

Release latches and flip open.



STEP 2

Raise back panel.



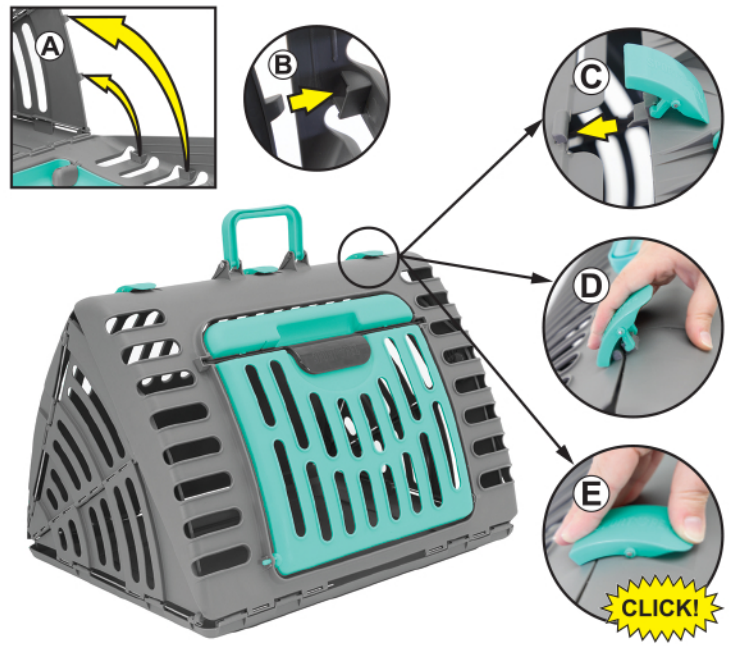
STEP 3

Straighten side panels, and push inner tabs on each side until a click is heard. Once clicked, the side panels will stand on their own.



STEP 4

Close the front panel and secure top latches. Begin by aligning the front panel to the notches on each side of the carrier (Fig A&B). Next, align the notches beneath the latches (Fig C). Finally, secure latches in place by locking backs of latches into notches (Fig D) and then pressing down on latches until they click (Fig E).



OPTIONAL STEP - DOOR REMOVAL

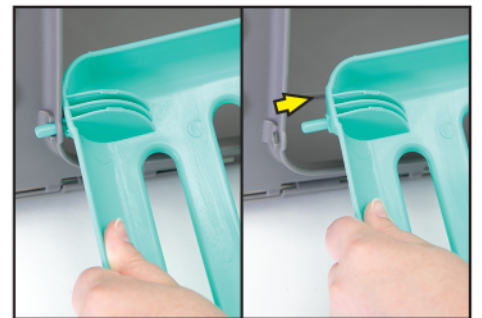
The Extra Large Cat Carrier has a removable door that can be used as a cozy, indoor home for cats, and allow them to become acclimated to the carrier before travel!



Using a phillips head screw driver (not included), remove both bolts from the door.



Remove door lock mechanism. Store the lock mechanism & bolts in a safe place for future use.



Pull out door tab from opposite side.

DO NOT RETURN THIS UNIT TO THE STORE Please make sure you have all parts prior to assembly.

All SportPet® products include a 6-month limited manufacturer's warranty for defective or missing parts.

If any parts are missing or damaged, **Please email our friendly customer service center at info@sportpet.com**



Because every cat is different, it is important to monitor your cat's behavior with this product. If at any time your cat damages this item, or any portion of this item becomes damaged, remove the damaged portion or discontinue use of the product.